

SolarInnovate Energy Solutions

Working process of base station power supply system



Overview

What are the components of a base station?

Power Supply: The power source provides the electrical energy to base station elements. It often features auxiliary power supply mechanisms that guarantee operation in case of lost or interrupted electricity, during blackouts. **Baseband Processor:** The baseband processor is responsible for the processing of the digital signals.

How does a base station work?

It usually connects the device to other networks or devices through a dedicated high bandwidth wire or fiber optic connection. Base stations typically have a transceiver, capable of sending and receiving wireless signals; Otherwise if they only send the trailer it will be considered a transmitter or broadcast point only.

Why do we need a base station?

Technological advancements: The New technologies result in evolved base stations that support upgrades and enhancements such as 4G, 5G and beyond, its providing faster speeds with better bandwidth. **Emergency services:** They provide access to emergency services, so that in case of emergency, people can call through their mobile phones.

What is a block diagram of a base station?

The block diagram of a base station typically includes the following key components: **Baseband Processor:** The baseband processor too deals with different communication protocols and interfaces with mobile network infrastructure. **Duplexer:** The duplexer enables the employment of a single antenna for both transmission and reception.

How does a base station RF work?

The base station's RF circuitry is housed in a small outdoor module known as a

remote radio head (RRH) or remote radio unit (RRU). RRH performs all RF functions such as transmit and receive functionality, filtering and amplification. It also has analog-to-digital or digital to analog and digital upconverters.

What are the properties of a base station?

Here are some essential properties: Capacity: Capacity of a base station is its capability to handle a given number of simultaneous connections or users. Coverage Area: The coverage area is a base station is that geographical area within which mobile devices can maintain a stable connection with the base station.

Working process of base station power supply system

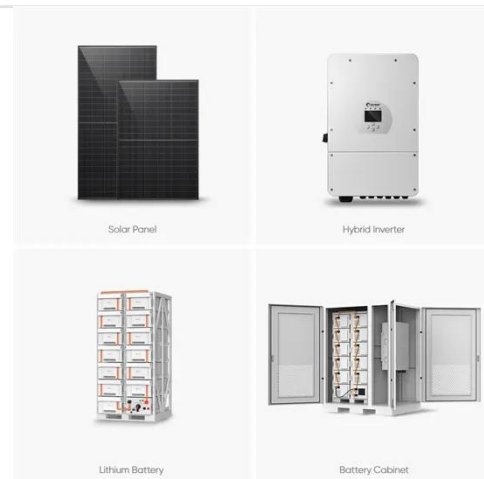


Telecommunication base station system working principle and system

Jan 13, 2024 · The ESB-series outdoor base station system utilizes solar energy and diesel engines to achieve uninterrupted off grid power supply. Solar power generation is the use of ...

Telecommunication base station system working principle and system

Jan 13, 2024 · Under normal circumstances, the power supply system operates in a parallel float charging state, where the rectifier module, solar module, load, and battery work in parallel; In ...



Distribution network restoration supply method considers 5G base

Feb 15, 2024 · This work explores the factors that affect the energy storage reserve capacity of 5G base stations: communication volume of the base station, power consumption of the base ...

Machine learning for base transceiver stations power failure ...

Dec 1, 2024 · Base Transceiver Stations (BTSs), are foundational to mobile networks but are vulnerable to power failures, disrupting service delivery and causing user inconvenience. This ...



Contact Us

For catalog requests, pricing, or partnerships, please visit:
<https://www.institut3i.fr>